

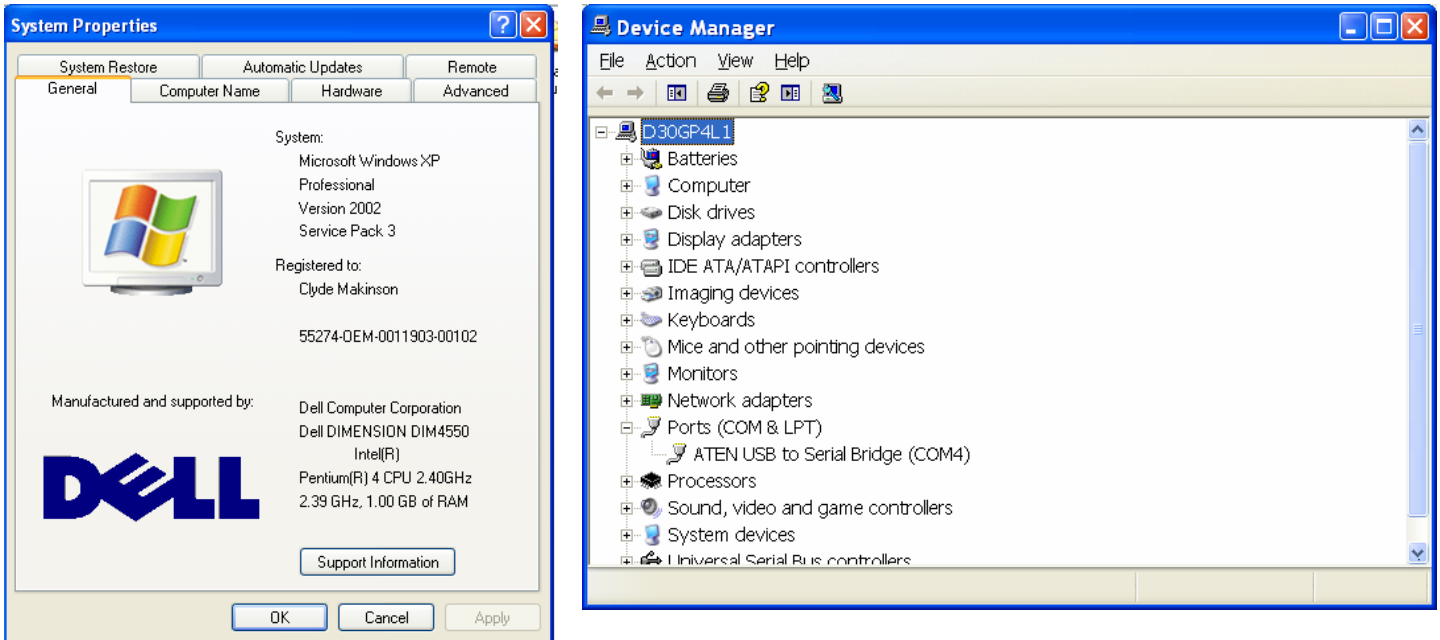
## USB/Serial Converter for Cooper Spur/Alge S4 Timer

When the serial converter is plugged into the computer, the computer automatically assigns it a COM port number. That number can be different for every time it is plugged in.

Determine the COM port # after serial to USB converter is plugged in:

Open the Device manager by right-clicking on the My Computer icon on the desktop, then click properties: Click on the Hardware Tab --- Then click on the Device Manger Button.

In screen shot below: ATEN USB to Serial Bridge (COM4)



Cooper Spur Software – Pre Race Setup - Check Race Details – Timing – enter COM port #